



REGOR
BIARRITZ . FRANCE



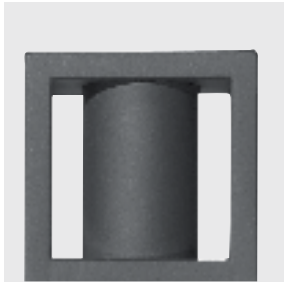
REGOR
BIARRITZ . FRANCE

REGOR

REGOR . Barrier Bollard

Galvanised steel construction. Choice of mica or DB finish.

Additional charge: Soft or RAL finish. Type C with below grade flange plate.



Product Name	Height	Order No.	Order No.	Order No.	Order No.
		Type A	Type B	Type C	Type D
	mm	fixed	detachable	flange mount	collapsible
REGOR	900	60.14800.0	60.14800.1	60.14800.2	60.14800.3
	1030	60.14801.0	60.14801.1	60.14801.2	60.14801.3
	1200	60.14802.0	60.14802.1	60.4802.2	60.14802.3

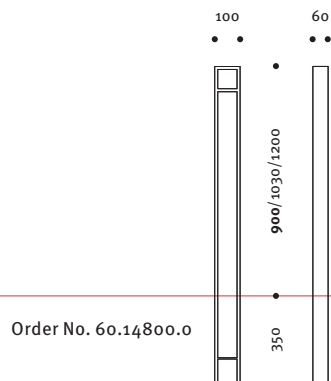
Product information
www.hess.eu/o711

TYPE A

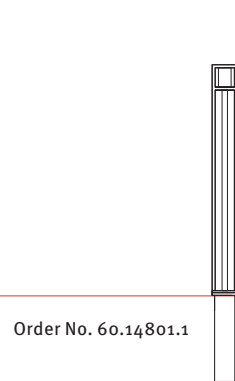
TYPE B

TYPE C

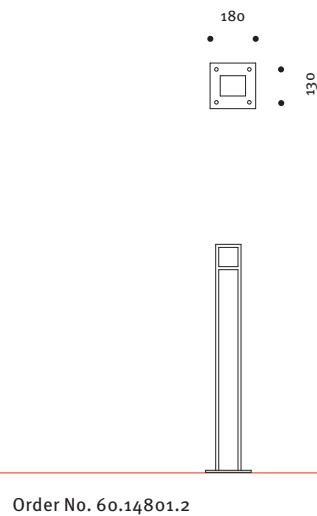
TYPE D



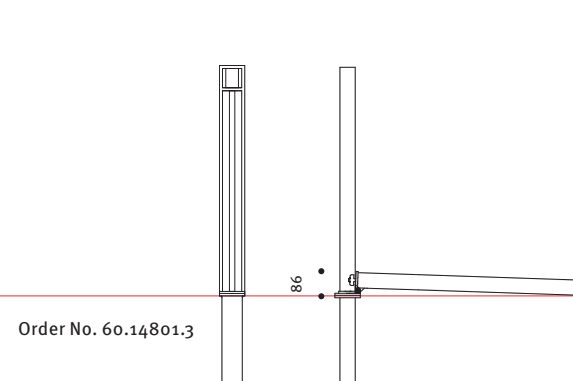
Order No. 60.14800.0



Order No. 60.14801.1



Order No. 60.14801.2



Order No. 60.14801.3

REGOR

TYPES OF MOUNTING



Fixed Bollards
TYPE A

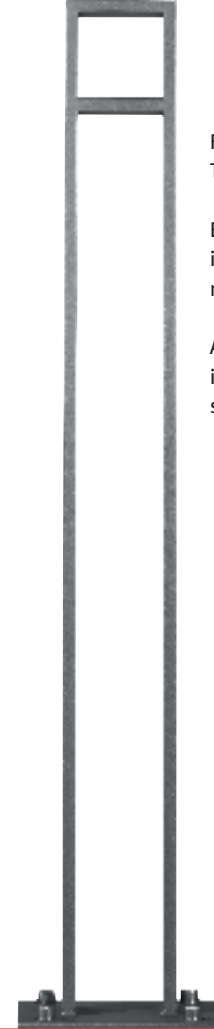
Designed with base that embeds in concrete. Detachment is not possible.



Detachable Bollards
TYPE B

Mount to separate embedded base from which they detach via triangular locking mechanism. Recessed in the top of the bollard, the triangular lock head engages and disengages with a special tool.

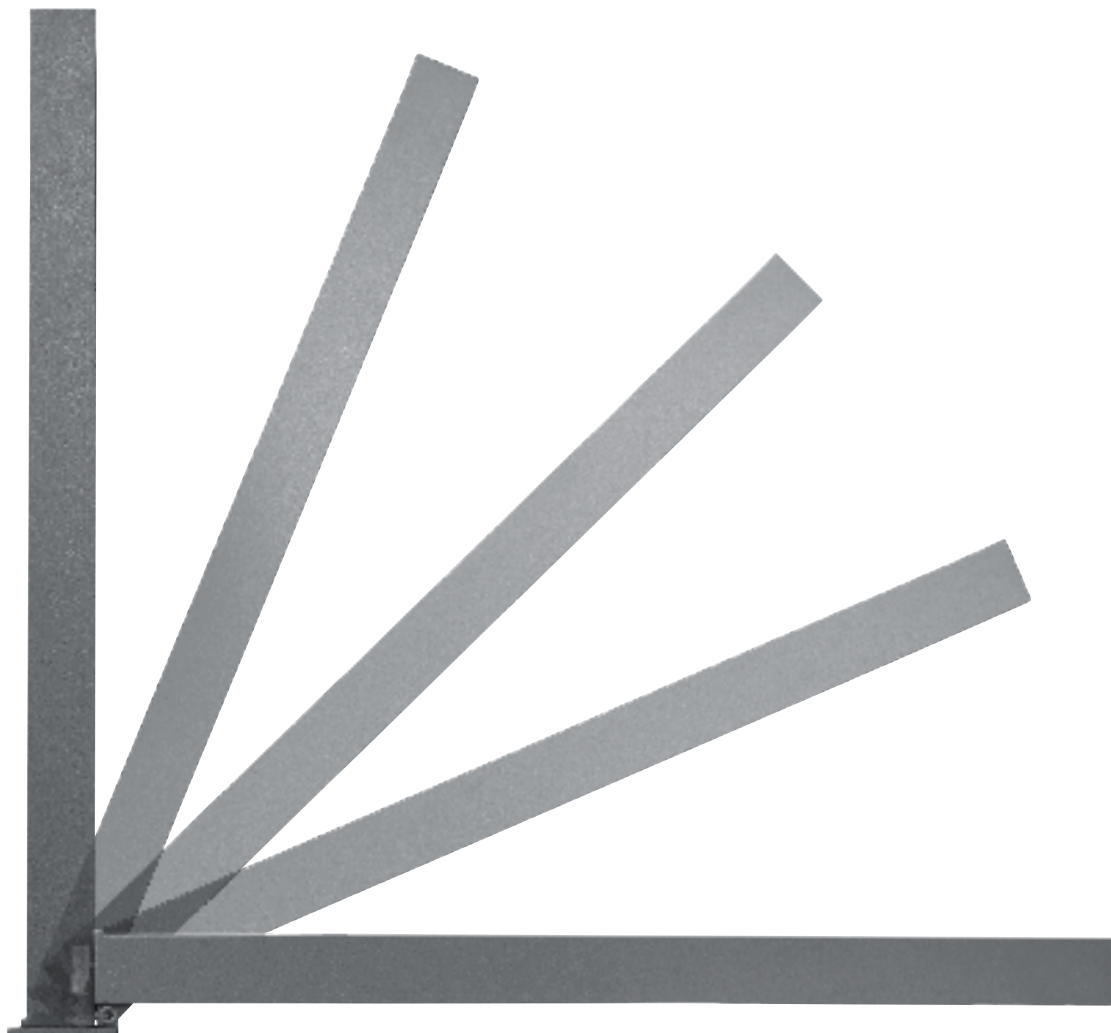
The head turns a camshaft engaging or disengaging the bollard in place. The embedded base installs grade flush in a permanent anchor footing.



Flange Mount Bollards
TYPE C

Employ a flanged base mounting plate instead of embedded base, which mounts via bolts and screw anchors.

Also available with flange plate that installs 200 mm below grade to enable surfacing, paving, etc.



Product information

www.hess.eu/o711

Collapsible Bollards TYPE D

Come with separate embedded base. Collapse at the joint after being disengaged by means of the triangular keyed locking mechanism.

Recessed in the top of the bollard, the triangular lock head operates with a special tool.

The head turns a camshaft releasing or locking the bollard in place. Embedded base installs grade flush in permanent anchor footing.